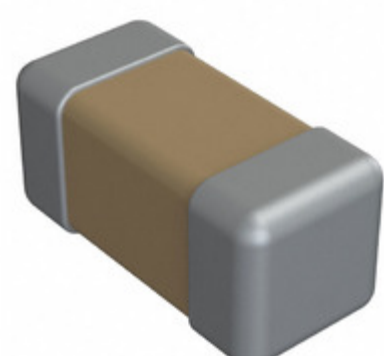


0603J0100390KCR



Part Number: [0603J0100390KCR](#)
Manufacturer: [Knowles Syfer](#)
Description: CAP CER 39PF 10V C0G/NP0 0603
Data sheet: [MLCC Capacitor Datasheet](#)
[MLCC Catalog](#)

RoHS Status: Lead free / RoHS Compliant
Ship From: Hong Kong
Shipment Way: DHL/Fedex/TNT/UPS/EMS

Images are for reference only.
 See Product Specifications for product details.
 Buy 0603J0100390KCR with confidence from
 Component-World.HK, 1 Year Warranty

[Request For Quotation](#)

PRODUCT PARAMETER

Part Number	0603J0100390KCR	Manufacturer	Knowles Syfer
Description	CAP CER 39PF 10V C0G/NP0 0603	Lead Free Status / RoHS Status	Lead free / RoHS Compliant
Quantity Available	393871 pcs	Data sheet	MLCC Capacitor Datasheet MLCC Catalog
Category	Capacitors	Voltage - Rated	10V
Tolerance	±10%	Thickness (Max)	0.032" (0.80mm)
Temperature Coefficient	C0G, NP0 (1B)	Size / Dimension	0.063" L x 0.032" W (1.60mm x 0.80mm)
Series	-	Ratings	-
Packaging	Tape & Reel (TR)	Package / Case	0603 (1608 Metric)
Operating Temperature	-55°C ~ 125°C	Mounting Type	Surface Mount, MLCC
Moisture Sensitivity Level (MSL)	1 (Unlimited)	Manufacturer Standard Lead Time	8 Weeks
Lead Style	-	Lead Spacing	-
Lead Free Status / RoHS Status	Lead free / RoHS Compliant	Height - Seated (Max)	-
Features	-	Failure Rate	-
Detailed Description	39pF ±10% 10V Ceramic Capacitor C0G, NP0 (1B) 0603 (1608 Metric)	Capacitance	39pF
Applications	General Purpose		

Component-World.com is a Reliable Stocking Distributor of Electronic Components. We specialize in all Knowles Syfer series electronic components. We have 393871 pieces of Knowles Syfer 0603J0100390KCR in stock available now. Request a quote from electronics components distributor at Component-World.com, our sales team will contact you within 24 hours.
 RFQ Email: info@Components-World.com

RELATED PRODUCTS

	Part#: 0603J0100391JCR Description: CAP CER 390PF 10V C0G/NP0 0603	Manufacturers: Knowles Syfer	RFQ
	Part#: 0603J0100390KCT Description: CAP CER 39PF 10V C0G/NP0 0603	Manufacturers: Knowles Syfer	RFQ
	Part#: 0603J0100391JCT Description: CAP CER 390PF 10V C0G/NP0 0603	Manufacturers: Knowles Syfer	RFQ
	Part#: 0603J0100390JCT Description: CAP CER 39PF 10V C0G/NP0 0603	Manufacturers: Knowles Syfer	RFQ
	Part#: 0603J0100391JXT Description: CAP CER 390PF 10V X7R 0603	Manufacturers: Knowles Syfer	RFQ
	Part#: 0603J0100391FCT Description: CAP CER 390PF 10V C0G/NP0 0603	Manufacturers: Knowles Syfer	RFQ
	Part#: 0603J0100391FCR Description: CAP CER 390PF 10V C0G/NP0 0603	Manufacturers: Knowles Syfer	RFQ
	Part#: 0603J0100391KCR Description: CAP CER 390PF 10V C0G/NP0 0603	Manufacturers: Knowles Syfer	RFQ
	Part#: 0603J0100390FCR Description: CAP CER 39PF 10V C0G/NP0 0603	Manufacturers: Knowles Syfer	RFQ
	Part#: 0603J0100333MXT Description: CAP CER 0.033UF 10V X7R 0603	Manufacturers: Knowles Syfer	RFQ
	Part#: 0603J0100391GCR Description: CAP CER 390PF 10V C0G/NP0 0603	Manufacturers: Knowles Syfer	RFQ
	Part#: 0603J0100333KXR Description: CAP CER 0.033UF 10V X7R 0603	Manufacturers: Knowles Syfer	RFQ
	Part#: 0603J0100391GCT Description: CAP CER 390PF 10V C0G/NP0 0603	Manufacturers: Knowles Syfer	RFQ
	Part#: 0603J0100390GCR Description: CAP CER 39PF 10V C0G/NP0 0603	Manufacturers: Knowles Syfer	RFQ
	Part#: 0603J0100390GCT Description: CAP CER 39PF 10V C0G/NP0 0603	Manufacturers: Knowles Syfer	RFQ
	Part#: 0603J0100390FCT Description: CAP CER 39PF 10V C0G/NP0 0603	Manufacturers: Knowles Syfer	RFQ
	Part#: 0603J0100333KXT Description: CAP CER 0.033UF 10V X7R 0603	Manufacturers: Knowles Syfer	RFQ
	Part#: 0603J0100391JXR Description: CAP CER 390PF 10V X7R 0603	Manufacturers: Knowles Syfer	RFQ
	Part#: 0603J0100333MXR Description: CAP CER 0.033UF 10V X7R 0603	Manufacturers: Knowles Syfer	RFQ
	Part#: 0603J0100390JCR Description: CAP CER 39PF 10V C0G/NP0 0603	Manufacturers: Knowles Syfer	RFQ

Related keywords for 0603J0100390KCR

Knowles Syfer 0603J0100390KCR	0603J0100390KCR distributor	0603J0100390KCR supplier	0603J0100390KCR price
0603J0100390KCR download datasheet	0603J0100390KCR datasheet	0603J0100390KCR stock	buy 0603J0100390KCR
Knowles Syfer 0603J0100390KCR	Syfer 0603J0100390KCR		